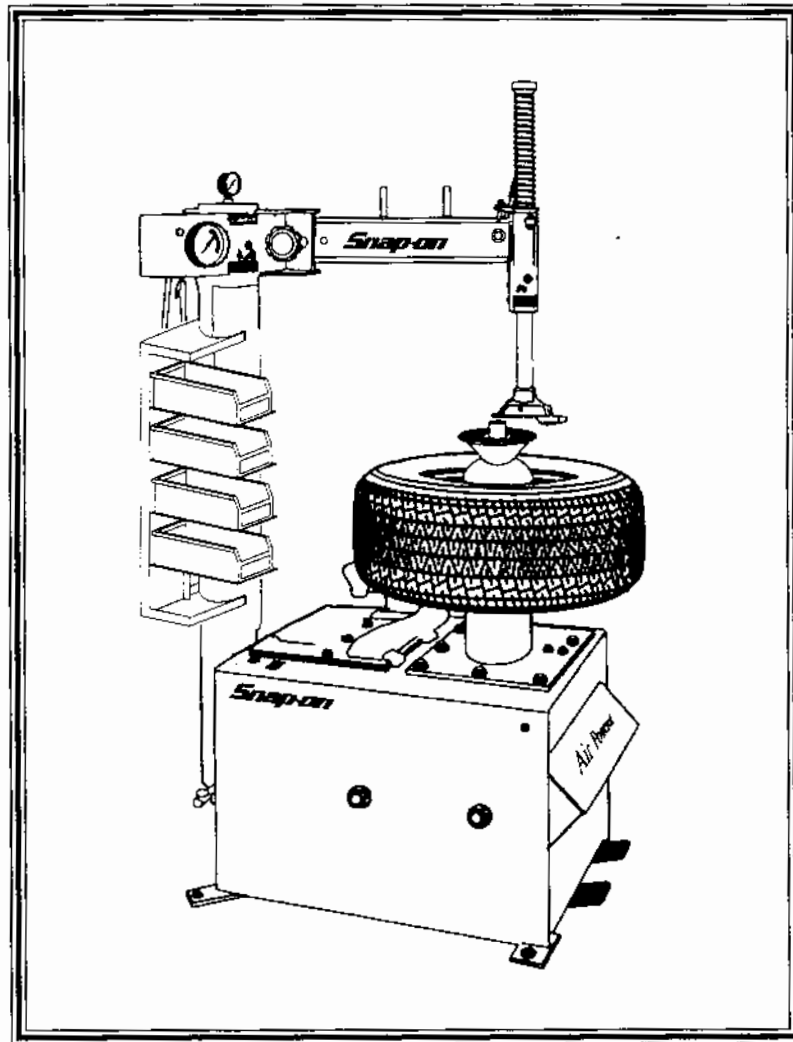


# *Snap-on*

## Model EE WH300A Tire Changer

Truck Bead Breaker Kit 87255



## Parts Reference

Form SST546

"FOR REFERENCE ONLY"

## **Table of Contents**


<b><u>Drawing</u></b>	<b><u>Parts Groupings</u></b>	<b><u>Page</u></b>
Figure 1	Cabinet, Tower and Shaft Assembly	2-3
Figure 2	Cylinder Assembly	4-5
	Labels and Decals	6
Figure 3	Bead Seater Assembly	7
Figure 4	Clutch Assembly	8
Figure 5	Swing Arm Assembly	9
Figure 6	Foot Pedal Assembly	10-11
Figure 7	Tools and Standard Accessories	12



REF	PART NO	DESCRIPTION
1	87046	Hold Down Shaft
2	87061	Positioning Pin
3	87062	Extension Spring (2 Used)
4	87047	Thrust Washer (2 Used)
5	1104337	Sq. Key 1/4 x 1-1/8" (2 used)
6	87041	Transmission Housing
7	1100064	Screw HHC 1/2-13x1-1/2"
8	1100257	1/2" Flat Washer (4 Used)
*	1100245	1/2" Split Lock washer (4 Used)
9	87288	Shaft Assembly, transmission
10	1118816	1-1/4" External Snap Ring
11	1110190	3/8 dia. x 1-1/2" lg. Dowel Pin
<b>12</b>	<b>87048</b>	<b>Upper Clutch Plate</b>
<b>13</b>	<b>87054</b>	<b>Pinion Assembly</b>
<b>14</b>	<b>87052</b>	<b>Transmission Pinion</b>
*	<b>1185277</b>	<b>1/4 dia. x 3/4 lg. Roll Pin</b>
15	87057	Flanged Bushing
<b>16</b>	<b>87337</b>	<b>Front Cover Assembly</b>
*	<b>66695</b>	<b>Edge Protector (Bottom Panel)</b>
17	66006	Lube Bottle
18	1267267	Dauber Wire (for Lube Bottle)
19	66756	Lube Bottle Holder
20	1101988	Self-tap Screw 1/4-20x3/4"
21	87163	Cover
22	87088	Bead Breaker Pad
23	1101988	Self-tap Screw 1/4-20x3/4"
24	1122030	Screw HHC 1/2-13x4"
<b>25</b>	<b>87005</b>	<b>Bead Breaker Arm Weldment</b>
*	<b>87159</b>	<b>Spring, Bead Breaker to Cabinet</b>
*	<b>87221</b>	<b>Bead Breaker Arm Bushings (2)</b>
26	87007	Bead Breaker Blade Weldment
27	1120242	ESNA Hex Nut 1/2x13
28	87127	Rod Cap
29	1100071	Hex Hd. Screw 3/8-16x1/2"
30	1101984	Flat Washer
31	87004	Link Pivot Arm Bushing
32	1122134	Nut
33	1100797	Shoulder Bolt
34	87327	Tower Weldment
35	1100257	Flat Washer 1/2"
36	1120242	ESNA Nut 1/2-13
37	87104	Knob, Adjustment
38	87236	Rod, Adjustment
<b>39</b>	<b>66588</b>	<b>Barb Fitting 3/4NPT for 3/4 Hose</b>
<b>40</b>	<b>1105063</b>	<b>Tee Pipe, Black 3/4 NPT</b>
<b>41</b>	<b>1105707</b>	<b>Close Nipple, Black</b>
<b>42</b>	<b>1106428</b>	<b>Pipe Bushing 3/4 - 1/4 NPT</b>
*	<b>66719</b>	<b>3/4" Air Hose</b>
*	<b>1101204</b>	<b>3/4" Hose Clamp</b>
<b>44</b>	<b>66329</b>	<b>Pressure Release Valve Assy.</b>
45	66170	Air Gauge

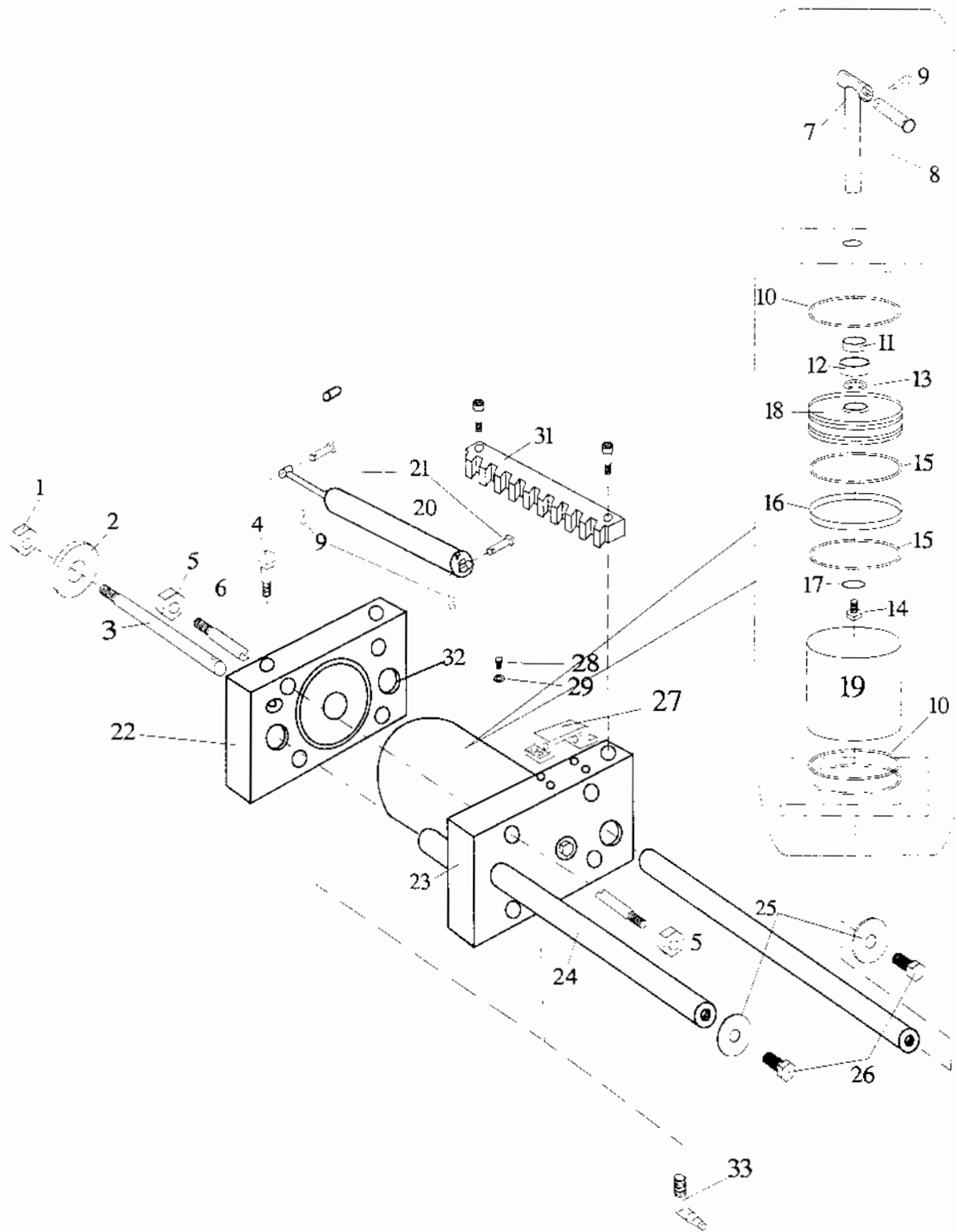
REF	PART NO	DESCRIPTION
<b>46</b>	<b>66522</b>	<b>Poppet Stem</b>
*	<b>1177420</b>	<b>"O"ring Seal</b>
*	<b>1101723</b>	<b>Crescent Retaining Ring</b>
<b>47</b>	<b>66472</b>	<b>Valve Bleeder Body</b>
<b>48</b>	<b>87161</b>	<b>Inflation hose assy.</b>
<b>50</b>	<b>67555</b>	<b>Barb Fitting/Orifice Assy.</b>
<b>51</b>	<b>1101915</b>	<b>1/4" Air Hose (Gauge to Bleeder)</b>
<b>52</b>	<b>1101834</b>	<b>Hose Clamp 1/4" (Gauge)</b>
<b>53</b>	<b>1101914</b>	<b>3/8" Air Hose</b>
*	<b>1101923</b>	<b>3/8" Hose Clamp</b>
*	<b>87142</b>	<b>Rubber Grommet</b>
<b>54</b>	<b>67243</b>	<b>90 deg. Barb Fitting 1/4 x 1/4"Hose</b>
<b>55</b>	<b>1105160</b>	<b>Steel Tee 1/4 NPT</b>
56	87341	Air Gauge, 300 PSI
57	1101985	Bolt 3/4-10x7" grade 5
58	1107387	Washer 3/4" ( 2 Used)
59	1120245	Nut 3/4"-10 Poly
60	1101988	Self-tapping Screw 1/4-20x3/4"
61	1101930	Washer
62	1122019	Washer - thin - use 3

\* Indicates not illustrated

 Indicates the item is located sub-assembly

# Figure 2

87116 - COMPLETE CYLINDER ASSEMBLY  
\* Part of 66350 Cylinder Rebuild Kit



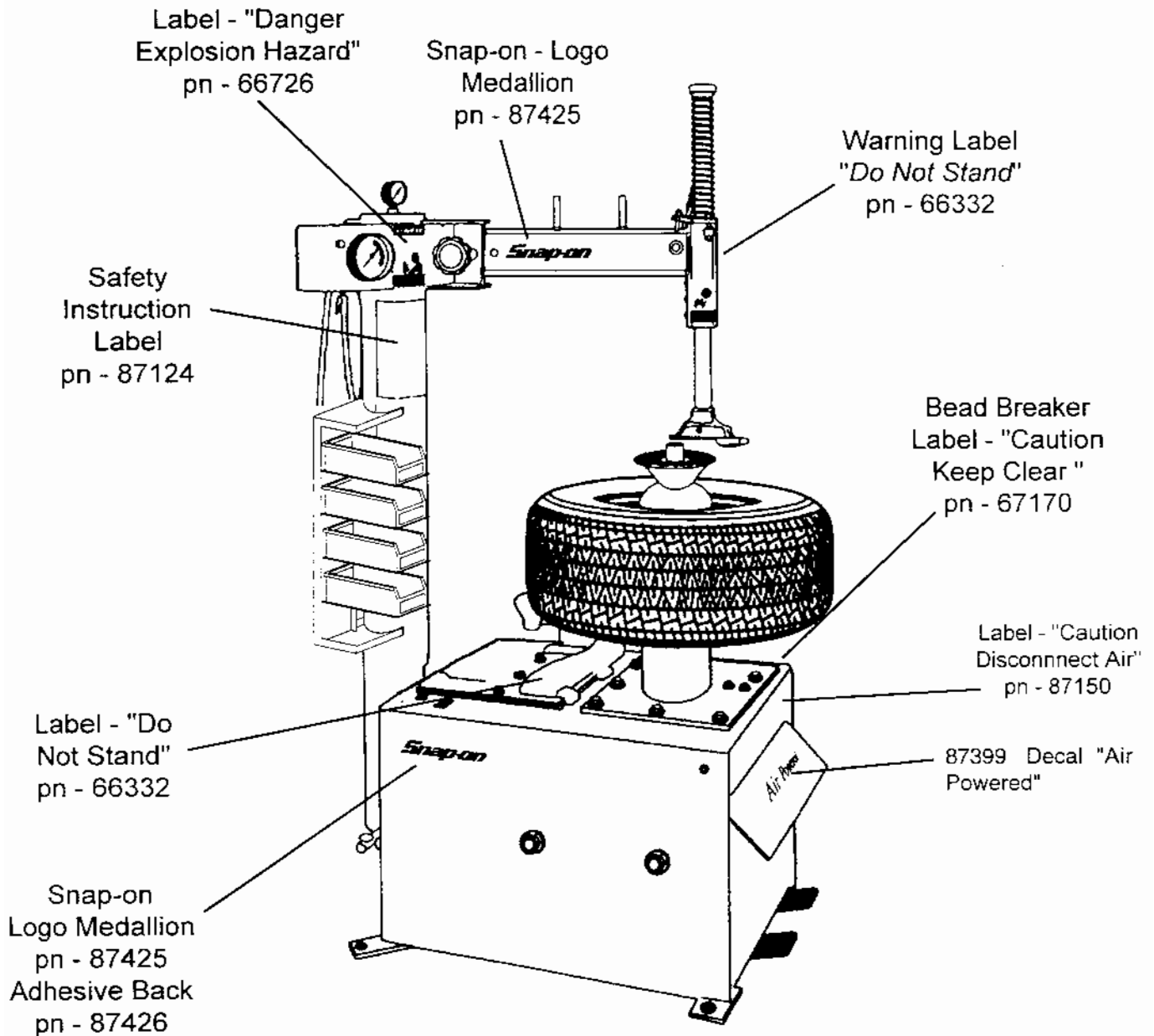
REF	PART NO	DESCRIPTION
1	1110438	ESNA Nut 3/4-16 UNF
2	87181	Polyurethane Washer
3	87068	Guide Rod (Bead Breaker Arm)
4	87067	Shoulder Bolt
<b>5</b>	<b>1121510</b>	<b>Hex Nut 7/16-14 UNF</b>
*	<b>1100244</b>	<b>Lock washer 7/16 ID</b>
6	67710	Threaded Stud 7/16-14x11-1/4"
7	87146	Piston Rod
8	87149	Clevis Pin 1" x 3-1/2"
9	1100352	Cotter Pin 1/8 x 1-1/2" long
<b>10</b>	<b>1101622</b>	<b>"O" ring 7x7-1/4x1/8"</b>
<b>11</b>	<b>66017</b>	<b>"U" Cup (Rod Seal)</b>
<b>12</b>	<b>66019</b>	<b>Bearing</b>
<b>13</b>	<b>1118730</b>	<b>Retaining Ring</b>
<b>14</b>	<b>1100026</b>	<b>Screw HHCS 5/8-18x1-1/2"</b>
<b>15</b>	<b>1101621</b>	<b>"O" ring 6-1/2x7x1/4"</b>
<b>16</b>	<b>66020</b>	<b>Wear Ring</b>
<b>17</b>	<b>1101690</b>	<b>"O" ring 13/16ID x 1-3/32ODx139</b>
18	66016	Piston
19	66546	Cylinder Body
20	87234	Fox Shock Absorber
21	87148	Clevis Pin 3/4x3-1/2"
22	87020	Piston side End Cap
23	87021	Closed side End Cap
24	87070	Cylinder Guide Rod
<b>25</b>	<b>1100266</b>	<b>Flat Washer 5/8"</b>
*	<b>1100247</b>	<b>Split Lock washer 5/8"</b>
<b>26</b>	<b>1100026</b>	<b>Screw HHC 5/8-18x1-1/2"</b>
<b>27</b>	<b>87377</b>	<b>Shock Mount Bracket</b>
28	1100044	Screw HHC 5/16-18x1.0"
29	1100244	Split Lock washer 5/16"
30	87131	Shoulder Screw
31	87071	Rack
<b>32</b>	<b>87128</b>	<b>Guide Rod Bushings</b>
*	<b>87132</b>	<b>Rod Wipers</b>
<b>33</b>	<b>67243</b>	<b>Barb Fitting 90 deg.</b>
*	<b>1101834</b>	<b>Hose Clamp 1/4"</b>
*	<b>1101915</b>	<b>Air Hose 1/4" ID (two pieces)</b>

\* NOT SHOWN

# Labels and Decals

**NOT SHOWN:**

87406 Label "Patent"  
87394 Serial Number Label  
90477 Label - "Service Number"



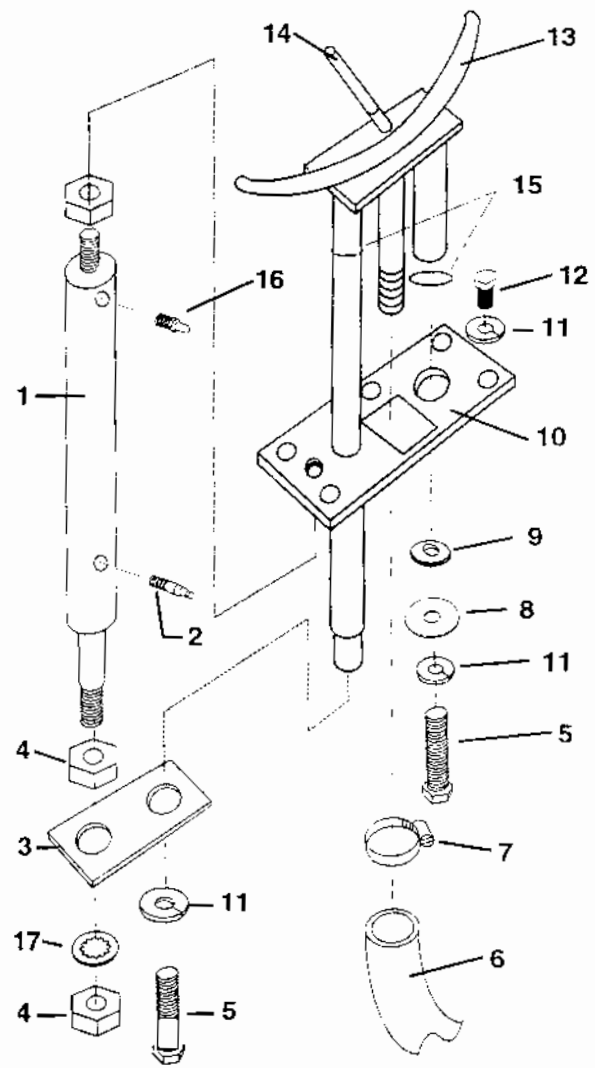
REF	PART NO	DESCRIPTION
-----	---------	-------------

1	87182	Cylinder, 7 inch
2	87129	Barb Fitting 1/8NPT x 1/4 hose
*	1101915	1/4 Air Hose (to 87129)
*	1101834	1/4" Hose Clamp
3	87174	Plate - Cylinder to Rod
4	1109585	Jam Nut 1/4-28
5	1122118	Shoulder Bolt
6	66719	3/4" Air Hose
7	1101204	Hose Clamp
8	1101984	Flat Washer
9	8027275	Grommet
10	87180	Bead Seater Support Weldment
11	1100242	5/16" Split Lock washer
12	1100044	Screw HHC 5/16-18x3/4"
13	87013	Bead Seater Ring Weldment
14	87183	Black Polyurethane Hose
15	1177395	"O" ring
16	69933	Breather
*	1107382	5/16 SAE Washer

\* NOT SHOWN

# Figure 3

## 87115 -Bead Seater Assembly



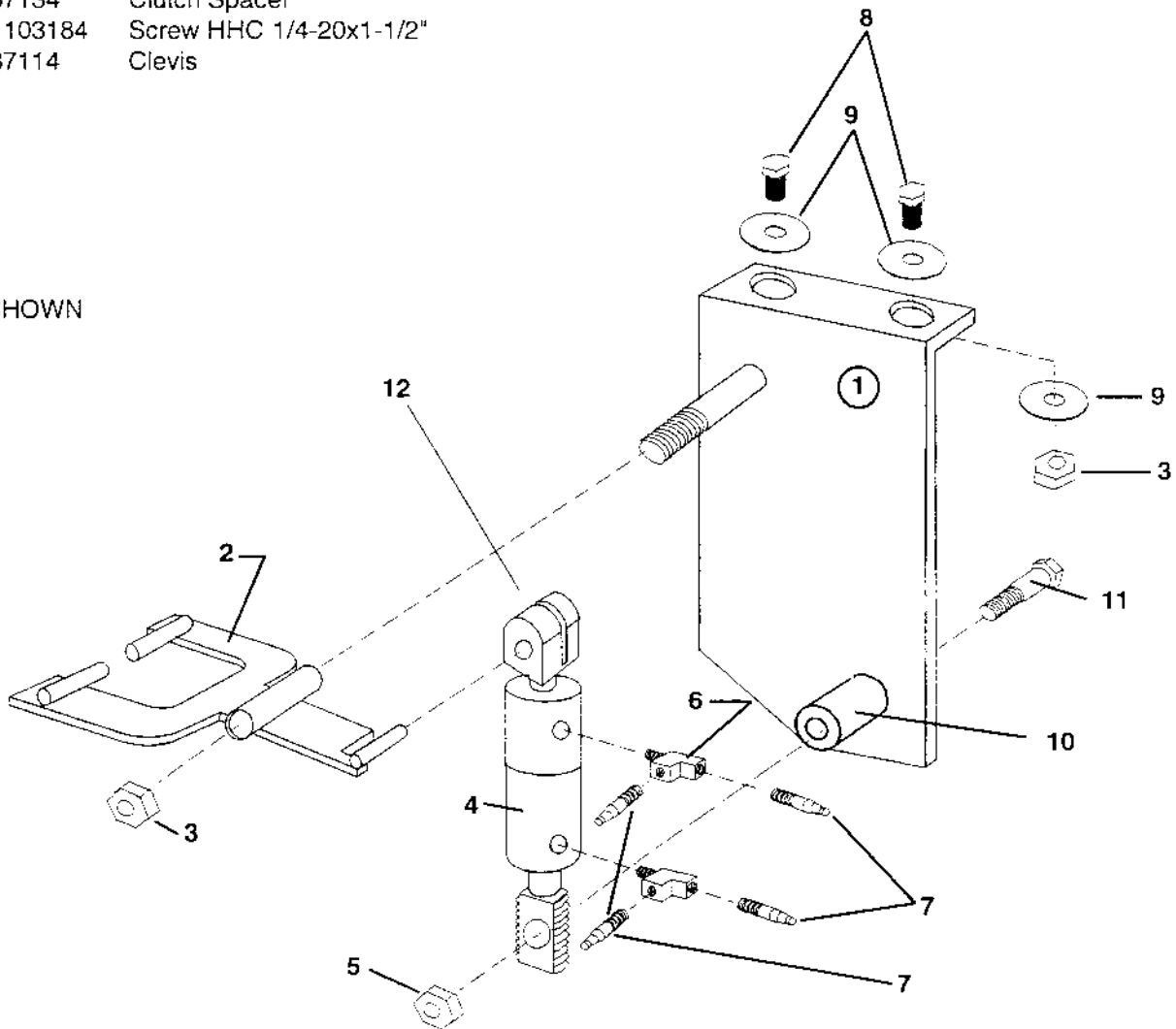


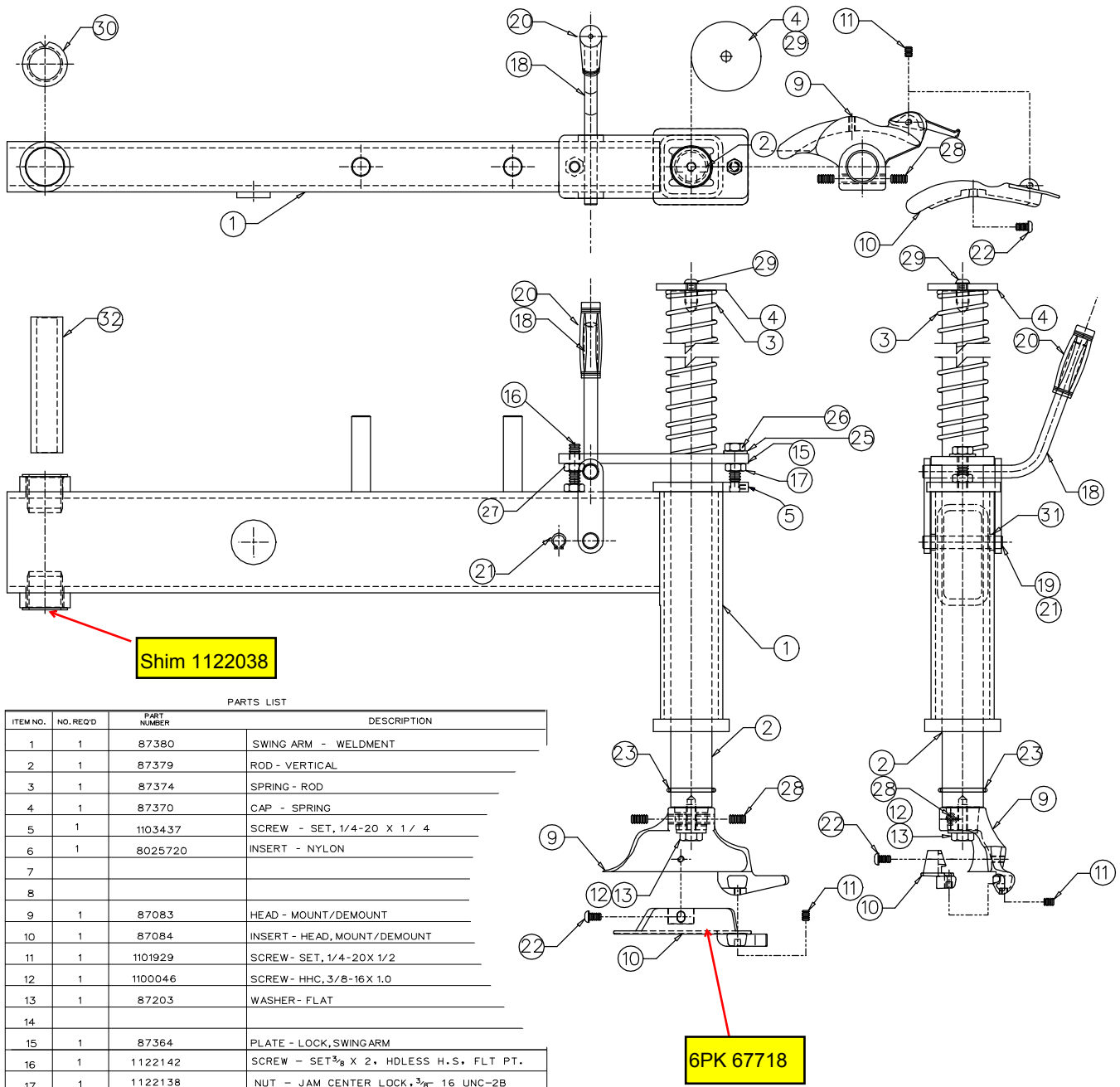
# Figure 4

## 87114 - Clutch Assembly

REF	PART NO	DESCRIPTION
1	87168	Clutch Bracket Weldment
2	87167	Clutch Plate Weldment
3	1120240	ESNA Nut 3/8-16
4	87119	Clutch Air Cylinder
5	1101609	1/4-20 ESNA Nut
6	1101998	1/8 NPT Street Tee
7	87129	Barb Fitting 1/8 NPT x1/4
*	1101834	1/4" Hose Clamp
8	1100086	Screw HHC 3/8-16x1-3/4"
9	1107383	Flat Washer 3/8"
10	87134	Clutch Spacer
11	1103184	Screw HHC 1/4-20x1-1/2"
12	87114	Clevis

\* NOT SHOWN





PARTS LIST

ITEM NO.	NO. REQ'D	PART NUMBER	DESCRIPTION
1	1	87380	SWING ARM - WELDMENT
2	1	87379	ROD - VERTICAL
3	1	87374	SPRING - ROD
4	1	87370	CAP - SPRING
5	1	1103437	SCREW - SET, 1/4-20 X 1 / 4
6	1	8025720	INSERT - NYLON
7			
8			
9	1	87083	HEAD - MOUNT/DEMOUNT
10	1	87084	INSERT - HEAD, MOUNT/DEMOUNT
11	1	1101929	SCREW - SET, 1/4-20X 1/2
12	1	1100046	SCREW - HHC, 3/8-16X 1.0
13	1	87203	WASHER - FLAT
14			
15	1	87364	PLATE - LOCK, SWINGARM
16	1	1122142	SCREW - SET 3/8 X 2, HDLESS H.S., FLT PT.
17	1	1122138	NUT - JAM CENTER LOCK, 3/8- 16 UNC-2B
18	1	87375	LOCK - WELD ASSEMBLY
19	1	87371	SHAFT - LEVER LOCK
20	1	87365	GRIP - FLEX
21	2	1118808	RING - RETAINING, 5/8
22	1	1177619	SCREW - BHSC, 1/4-20X 1/2
23	1	1101840	"O"-RING
24			
25	1	1107383	WASHER - FLAT, 3/8
26	1	1102366	SCREW - HEX SOCHD CAP, 3/8 - 16 X 2.00
27	2	1121551	NUT - JAM, 3/8-16
28	2	1100100	SCREW - SET, 3/8-16X 3/4
29	1	1167799	SCREW-BB HS 3/8-16 X 3/4 UNC-2A
30	2	87057	BUSHING - FLANGED
31	2	87388	SPACER - SWING ARM
32	1	87220	PIVOT BUSHING -SWING ARM

Figure 5  
87382 - Swing Arm Assembly



## 87331 - Foot Pedal Assembly

### PARTS LIST

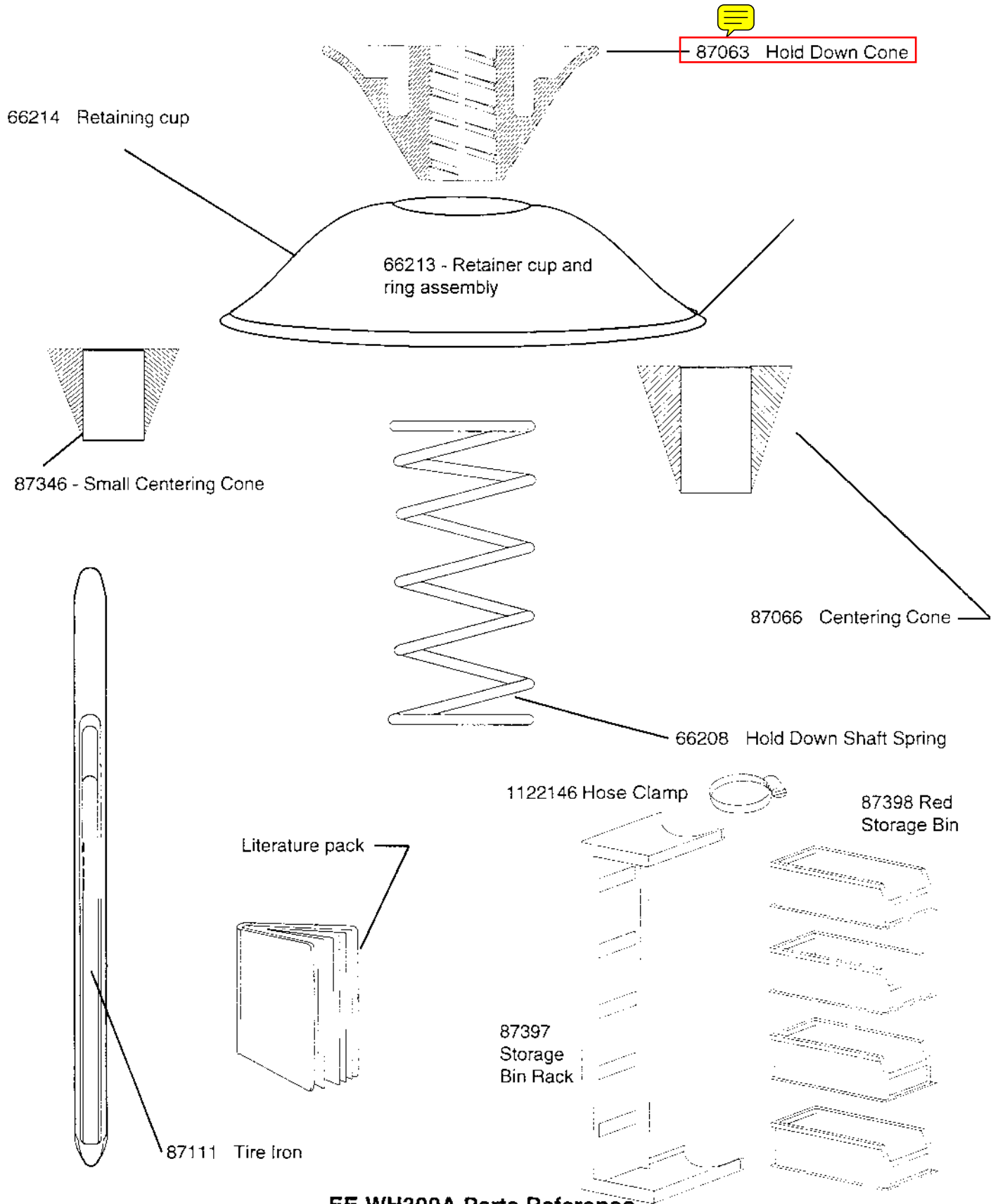
ITEM NO.	NO. REQ'D	PART NO.	DESCRIPTION
1	1	87112	PANEL - VALVE MOUNTING
2	1	66782	VALVE - 5 PORT/2 POSITION
3	2	1101540	NUT KEPS, *1/4-20
4	2	1102348	SCREW SHC, *1/4-20 X 1 $\frac{3}{4}$
5	2	59659	MUFFLER, 1/4 NPT
6	3	67541	(3-87165) (1-66116) BARB FITTING - STRAIGHT 1/4 NPT
7	4	1101834	(3-87165) (1-66116) CLAMP - HOSE (1/4 HOSE)
8	5.17 FT	1101915	CUT (2) PCS 26", (1) 10" HOSE - AIR 1/4
9			
10	1	67783	BRACKET - VALVE, 5 PORT, 2 POSITION
11	2	1111599	SCREW HHC, 1/4-20 X 5/8
12	2	1100241	WASHER - LOCK, 1/4
13	2	1101540	NUT - KEPS, 1/4-20
14	1	66115	VALVE - QUICK CLOSING (INFLATION)
15	2	67536	(1-66115) (1-66116) BARB FITTING 90° 1/4 NPT 3/8 BARB
16	1	1187950	WASHER - INTERNAL TOOTH
17	.75 FT.	1101914	HOSE - AIR 3/8
18	2	1101923	(1-66115) (1-66116) CLAMP - HOSE (3/8 HOSE)
19			
20	2	1101642	(1-66115) TEE - STREET 1/4 NPT
21	1	67555	BARB FITTING/ORIFICE
22	1	66116	VALVE - QUICK CLOSING (DUMP)
23	2	1105386	ELBOW - STREET, 3/4 NPT
24	1	1105063	TEE - PIPE , BLACK, 3/4 NPT
25	2	66588	BARB FITTING, 3/4 NPT
26	1	1105707	NIPPLE - PIPE, CLOSE
27	1	1106428	BUSHING - THD. PIPE 3/4 NPT - 1/4 NPT
28	1	1101627	WASHER - INTERNAL TOOTH
29	2	1107387	WASHER - FLAT, 3/4
30	3	67243	BARB FITTING, 90 DEG 1/4 NPT / 1/4 BARB
31			

**NOTES:**

- 1) USE PIPE SEALANT OR TAPE ON ALL FITTINGS. NO LEAKS PERMISSABLE.
- 2) ROUTE HOSES NOTED UNDER ITEM 2 AND NEATLY TIE-WRAP HOSES TO ITEM 1 BY THRU HOLE PROVIDED.
- 3) USE ITEMS 28 & 29 IN ANY COMBINATIONS ON ITEM 22 TO INSURE THAT ITEMS 14 & 22 ARE INLINE (0.0) OR THAT ITEM 14 IS .030 MAX. EXTENDED FURTHER AHEAD THAN ITEM 22.
- 4) MOUNTING NUT FOR ITEMS 14 & 22 IS PROVIDED WITH VALVES FROM VENDOR.
- 5) MAKE SURE THAT THIS ITEM 21 IS INSTALLED - NO SUBSTITUTIONS. THIS BARB/ORIFICE CONTROLS THE RATE OF ASCENT OF THE BEAD SEATER.
- 6) MAKE SURE THAT ITEMS 14 & 22 ARE ORIENTED CORRECTLY BY NOTING DIRECTION OF ARROWS CAST INTO BODY OF VALVES.
- 7) APPLY LOCTITE \*222 TO ALL MECHANICAL FASTENERS (SCREWS-NUTS).OR OMNIFIT 1150.
- 8) ORIENT ALL HOSE CLAMPS FOR EASY ACCESS BY FIELD SERVICE TECHS.

# Figure 7

## Tools & Standard Accessories



***Snap-on***

309 Exchange Ave.  
Conway Arkansas, 72032  
ph: (800) 311-4225